

DA62 MPP



OPTIONAL GREY / CAMOUFLAGE PAINTING

REDUCING SUN REFLECTIONS

SATCOM POD (L, KA, KU, X BAND)

DELIVERING LIVE SENSOR DATA TO THE HQ
(NOT SHOWN IN THE PICTURE)

INTERNET IN THE SKY DIRECT SATELLITE ACCESS

MISSION COMPARTMENT

HARD POINTS AND/OR EQUIPMENT RACK
TO HOLD THE MISSION EQUIPMENT

ON-TOP EXHAUST SYSTEM

LOW NOISE + LOW IR SIGNATURE

WX MULTI PURPOSE NOSE

Max. 65 kg (132 lbs)
Max. 500 mm (20")

WEATHER RADAR
EO/IR CAMERAS

MISSION GENERATOR

100 A

UNDERFLOOR POD (RECCE POD)

LONG RANGE OBLIQUE PHOTOGRAPHY SENSOR
VARIOUS SENSORS POSSIBLE

OPERATOR STATION

ERGONOMIC DESIGN TAILORED FOR
THE NEEDS OF THE OPERATOR
MODULAR FOR 1 OR 2 OPERATORS

LOS LINK

DELIVERING IN LOW LATENCY
LIVE INFORMATIONS TO THE
DECISION MAKERS ON THE GROUND



APPLICATIONS



ONE AIRCRAFT - MANY MISSIONS



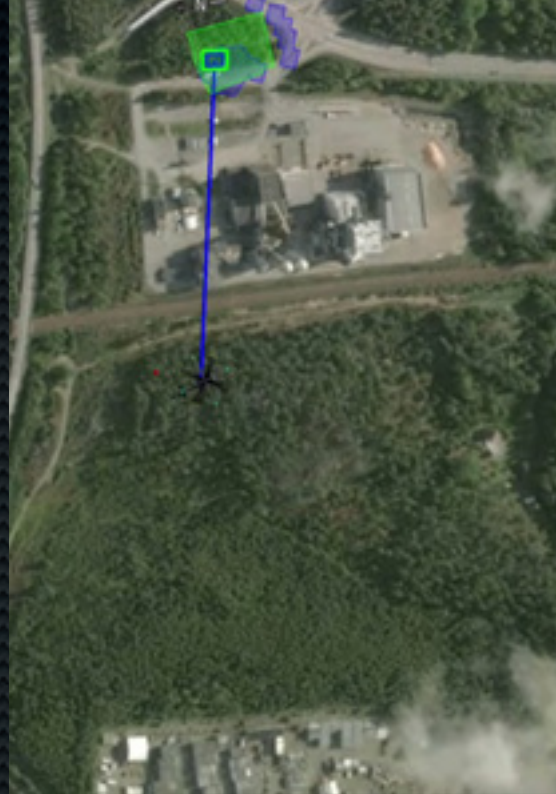
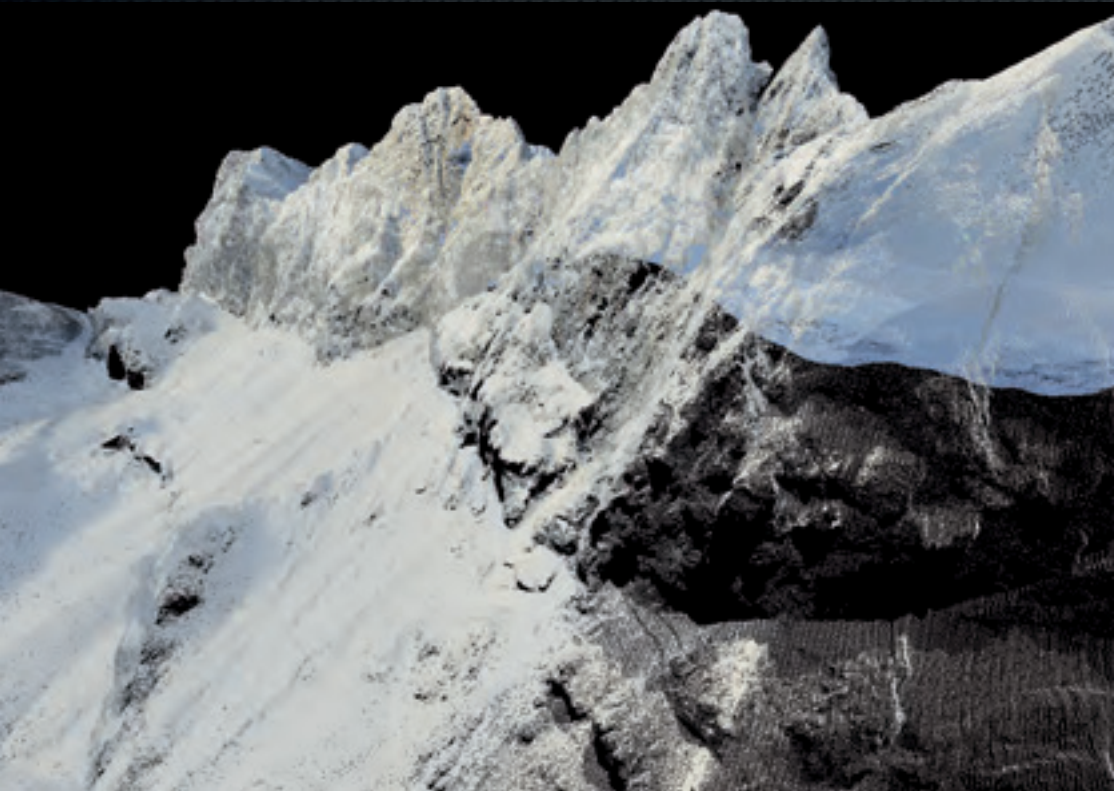
Surveillance & Reconnaissance



Aerial Surveys



Broadcasting & More



APPLICATIONS



Night vision



Flood prevention



Fire fighting



Real time information



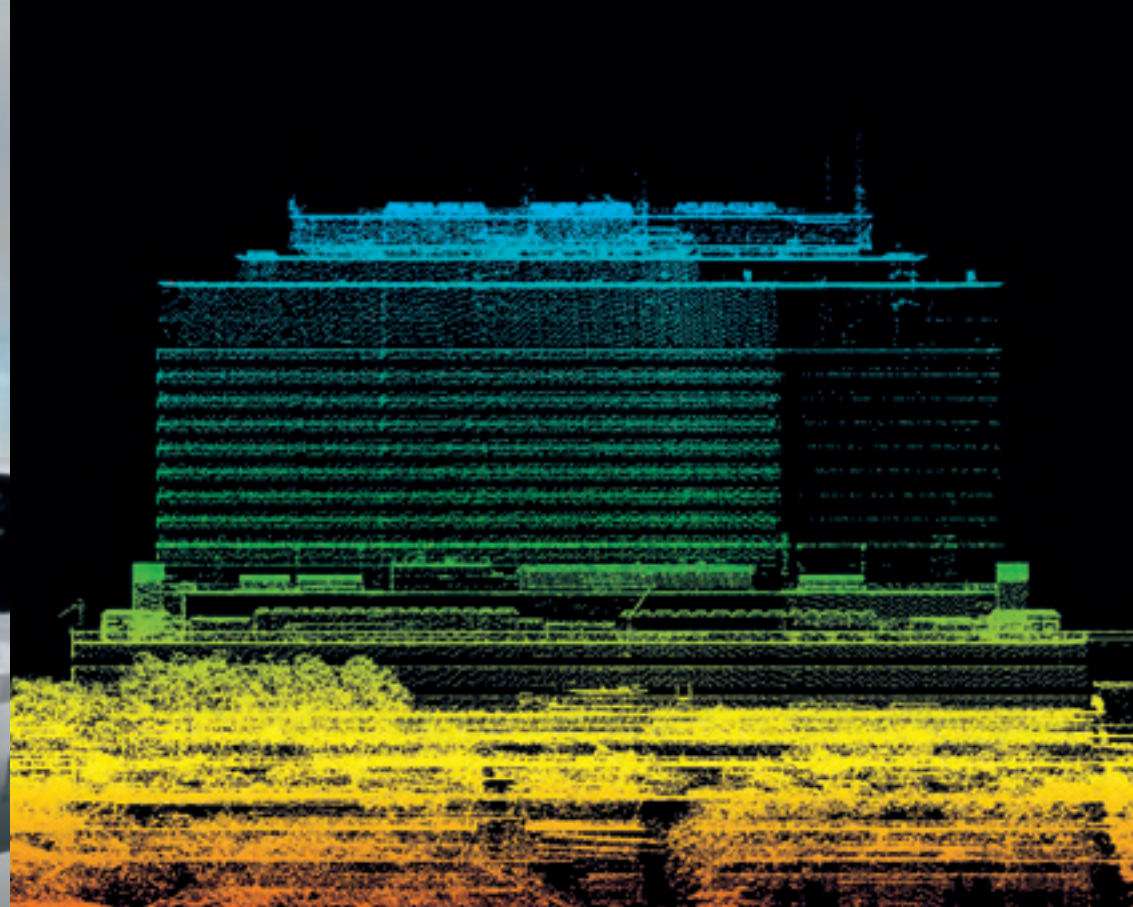
Oil spill detection



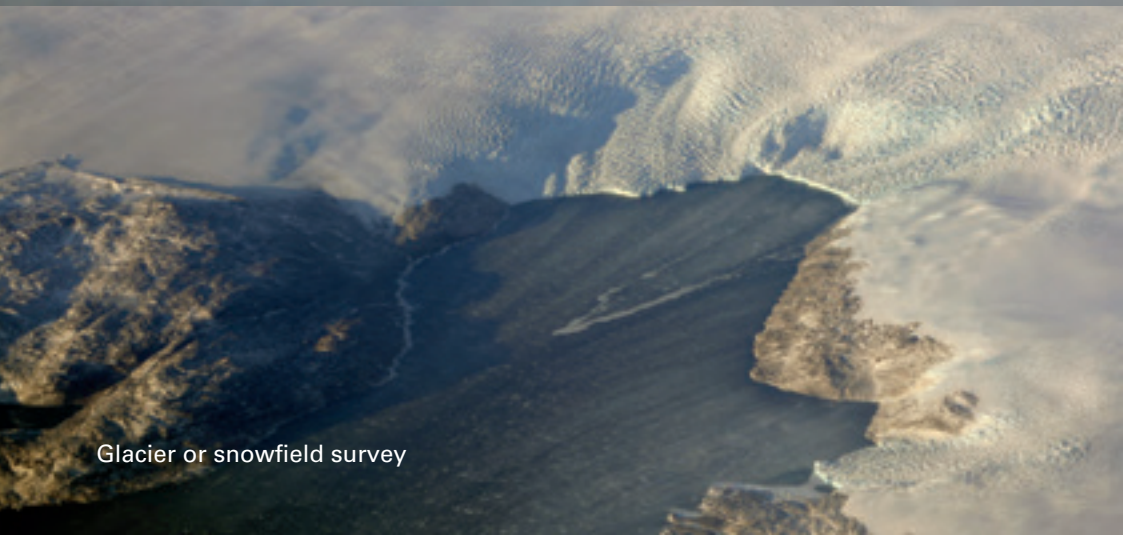
Pollution control



Atmospheric sampling (volcanic ash measurement)



Laser scanning



Glacier or snowfield survey



Landuse mapping

BORDER CONTROL

- Smuggling ▪ Drug interdiction ▪ Human trafficking ▪ Anti Terrorist Activity ▪ Population migration

GENERAL SURVEILLANCE

- Event protection (marches, demonstration, etc.) ▪ Public order & riot control ▪ VIP protection

MARITIME PATROL

- Coastal patrol ▪ Illegal fishing ▪ Pirate activity ▪ Search and rescue

DISASTER MANAGEMENT

- Fire management ▪ Chemical spills ▪ Flood management ▪ Road, rail crashes ▪ Landslides

ENVIRONMENTAL MONITORING

- Chemical and oil spill detection ▪ Pipeline leak detection ▪ Pollution control ▪ Atmospheric sampling ▪ Animal control

INFRASTRUCTURE MONITORING

- Power line inspection ▪ Pipeline leak inspection (e.g. leak, sagging) ▪ Monitoring of gas and oil storage, water supply systems ▪ Monitoring of critical buildings ▪ Railroad and highway monitoring

RADIO MONITORING

- Border guard ▪ Maritime rescue ▪ Military

INFRASTRUCTURE PLANNING

- Powerline planning/monitoring ▪ Pipeline planning/monitoring ▪ Railroad and highway planning/monitoring ▪ Visualization of planned projects (bridges, buildings, etc.)

MINING AND EXPLORATION

- Natural resource exploration ▪ General mine support operations ▪ Monitoring of compliance with mining laws & rules

DISASTER PREVENTION

- Geo-hazard prevention ▪ Landuse mapping ▪ Flood prevention ▪ Fire fighting ▪ Mass movement detection ▪ Detection of ocean pollution

VEGETATION ANALYSIS

- Landuse mapping ▪ Precision farming ▪ Brownfield monitoring ▪ Forest canopy mapping

SECURITY MISSIONS

- Change detection ▪ Detection of camouflaged vehicles ▪ Detection of illegal ship unloading ▪ Monitoring of compliance with mining and building law

MAPPING

- Urban and rural mapping ▪ Cadastral survey ▪ Landuse and corridor mapping ▪ Orthophotos ▪ 3D mapping ▪ Topographic maps

MEDIA

- Live newsgathering ▪ Live coverage of sporting and mass events ▪ Midpoint relay ▪ High-definition videos



The MPP has been specially designed for carrying multi-functional aerial sensors, like EO/IR cameras, land and sea radars, COMINT solutions, airborne laser scanners or large format digital aerial cameras, and more. Mission kits can be mounted on specific hard points located on the nose and belly of the aircraft as well as in the cabin and nose luggage compartments.

MPP FACTS AND OPTIONS



OPTIONS FOR DA62 MPP AND DA42 MPP

Aircraft Options

TKS anti-icing system	25 kg	55.1 lbs
Auxiliary tanks (+ 26 USGal)	20 kg	44 lbs
Integrated oxygen system	14 kg	30.8 lbs
Mobile oxygen system	4 kg	8.8 lbs
Air condition RACC system	41 kg	90 lbs
Flight data recorder	4 kg	9 lbs
Electrical adjustable rudder pedals	N.A.	N.A.
Custom exterior striping	N.A.	N.A.

MPP Options

Noise & IR-signature reduction kit	7 kg	15 lbs
Operator console (replaces co-pilot seat)	0 kg	0 lbs
Mission generator 2.8 KW (28V/100 Amps)	10 kg	22 lbs
HF aircraft radio communication (2-30MHz)	5 kg	11 lbs
Garmin tactical software (Search & Rescue)	0 kg	0 lbs

Avionics Options

Honeywell KN63 DME	3 kg	6.6 lbs
WX500 Stormscope	3 kg	6.6 lbs
Avidyne TAS 605 traffic advisory system	7 kg	15.4 lbs
Garmin GSR 56 satellite receiver system	1 kg	2.2 lbs
Becker 3500 ADF	4 kg	9 lbs
Garmin synthetic vision	0 kg	0 lbs
Garmin chart view	0 kg	0 lbs
Garmin GWX70 Weather Radar	N.A.	N.A.

DA62 MPP - FACTS AND SPECIFICATIONS

Power plant

Engine	2x AUSTRO ENGINE AE330 (180 hp, turbo charged)	
Propeller	2x MT 3-blade hydraulic constant speed propeller	
Fuel grades	Jet A-1, Jet A, TS-1 (Russia, Ukraine), RT (Russia, Ukraine), No. 3 Jet Fuel (China), JP-8	

Dimensions / mass / loading

Length / height ¹⁾	9.19 m / 2.82m	30 ft 2 in / 9 ft 3 in
Wing span	14.55 m	47 ft 9 in
Crew	1 or 2 pilots	1 or 2 operators
Typical mission crew	1 pilot	1 operator
Empty weight	1,590 kg	3,505 lbs
Useful load	710 kg	1,565 lbs
Max. take off mass	2,300 kg	5,071 lbs
Max. usable fuel capacity	326 lt / 261 kg	86 US gal / 576 lbs
main tank	189 lt / 151 kg	50 US gal / 335 lbs
auxiliary tank	137 lt / 110 kg	36 US gal / 241 lbs

Performance (MTOM, ISA)

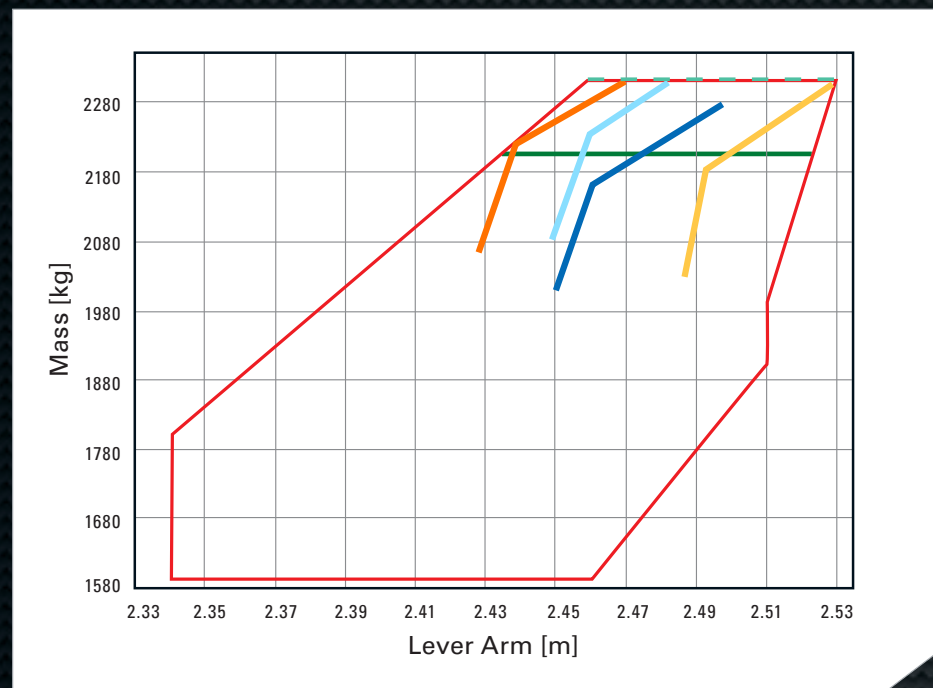
Max. cruise speed (14,000 ft, MCP)	356 km/h TAS	192 kts TAS
Min. operation speed	140 km/h IAS	76 kts IAS
Consumption at 35% power (loiter speed) in total	28 lt/hr	7.4 USGal/hr
Max. airborne operations time	11.7 hours	11.7 hours
Typical airborne operations time ²⁾	6 - 8 hours	6 - 8 hours
Max. range at 50% power in 14,000 ft (standard tank / incl. auxiliary tank)	1356 km / 2,341 km	732 nm / 1,264 nm
Takeoff performance (ISA, MSL, ground roll / take-off distance)	480 m / 883 m	1,574 ft / 2,897 ft
Landing performance (ISA MSL, ground roll / landing distance)	441 m / 779 m	1,447 ft / 2,556 ft
Max. service ceiling	6,096 m	20,000 ft

¹⁾ Measurements can differ depending on the specific sensor equipment.

²⁾ With standard mission equipment and 2-man crew.

Specifications are based on clean aircraft without sensor or mission equipment. Specifications can differ depending on the specific sensor equipment. The above quoted data are approximately specifications and may change without notice.

DA62 MPP - MASS & BALANCE



Payload examples:

- Law enforcement lite: 85 kg / 187 lbs (4 men crew with full fuel)
- Law enforcement premium: 140 kg / 309 lbs (4 men crew with 78 US gal fuel or 3 men crew with full fuel)
- ISTAR/coastal surveillance/search & rescue: 160 kg / 353 lbs (4 men crew with 72 US gal fuel or 3 men crew with full fuel)
- Mapping configuration: 190 kg / 419 lbs (3 men crew with full fuel, 3 seats available in this configuration)

Limitations:

- M&B envelope @ 2,300 kg / 5,071 lbs MTOM
- MZFM @ 2,200 kg / 4,850 lbs
- Max. landing mass

Maximum take off mass	2,300 kg	5,071 lbs
Empty weight	1,590 kg*	3,505 lbs*
Payload available in TOTAL	710 kg	1,566 lbs
Typical airplane standard options	58 kg**	128 lbs**
Crew (2 men)	160 kg	353 lbs
Fuel (86 US gal/ 326 lt Jetfuel)	265 kg***	576 lbs***
TKS anti-icing fluid (3.9 US gal/ 15 lt)	16 kg	35 lbs
Payload mission equipment	215 kg	474 lbs

* Average empty weight, excl. airplane standard options ** TKS anti-icing installation, Auxiliary tanks, DME, WX500 stormscope, Avidyne TAS605 *** Specific fuel weight 0.8 kg/lt

AVIATION AS UNIQUE AS YOU ARE



NORTH & SOUTH AMERICA, AUSTRALIA, NEW ZEALAND:

1560 Crumlin Sideroad, London, ON, Canada, N5V1S2
Phone: +1 800 268 4001, sales-canada@diamondaircraft.com

EUROPE, MIDDLE EAST, AFRICA, RUSSIA/CIS, ASIA (HQ):

N. A. Otto-Strasse 5, 2700 Wiener Neustadt, Austria
Phone: +43 2622 26700, sales-austria@diamondaircraft.com

CHINA:

Wanfeng Airpark, Dashiju Town
Xinchang County, Zhejiang Province, P. R. China

www.diamondaircraft.com
#WeFlyDiamondAircraft



www.facebook.com/diamondaircraftind



www.instagram.com/diamondaircraftind



www.youtube.com/diamondaircraftmedia

All specifications, weights, representations, colors, equipment, use of materials and model references provided herein are for purely illustrative purposes and legally non-binding, subject to alterations and not warranted or guaranteed to be true or accurate. Actual useful load will vary depending on options installed on the aircraft. Any and all information given in this brochure cannot exempt the person operating the aircraft to use actual data for flight planning. The aircraft and/or product, and the chosen optional equipment (if any) shall meet exclusively the characteristics and specifications as defined and agreed in the written agreement with Diamond Aircraft Group. Referenced Diamond Aircraft trademarks are owned by Diamond Aircraft Industries GmbH or its subsidiaries. All other brands, product names, company names, trademarks and service marks are the properties of their respective owners. All rights reserved. ©2021, Diamond Aircraft Industries GmbH. For additional information on Diamond Aircraft and its products please visit www.diamondaircraft.com. 04/2021 S_30643